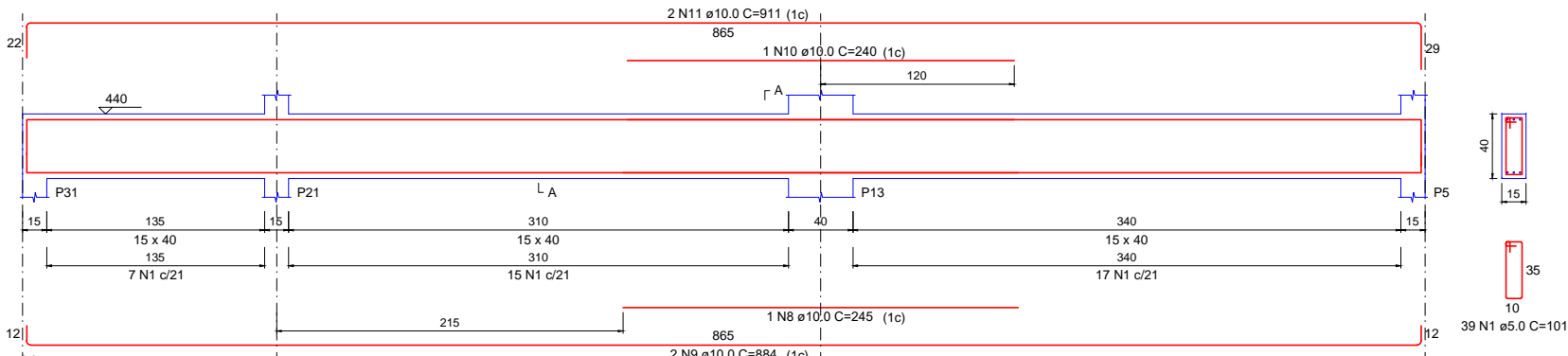
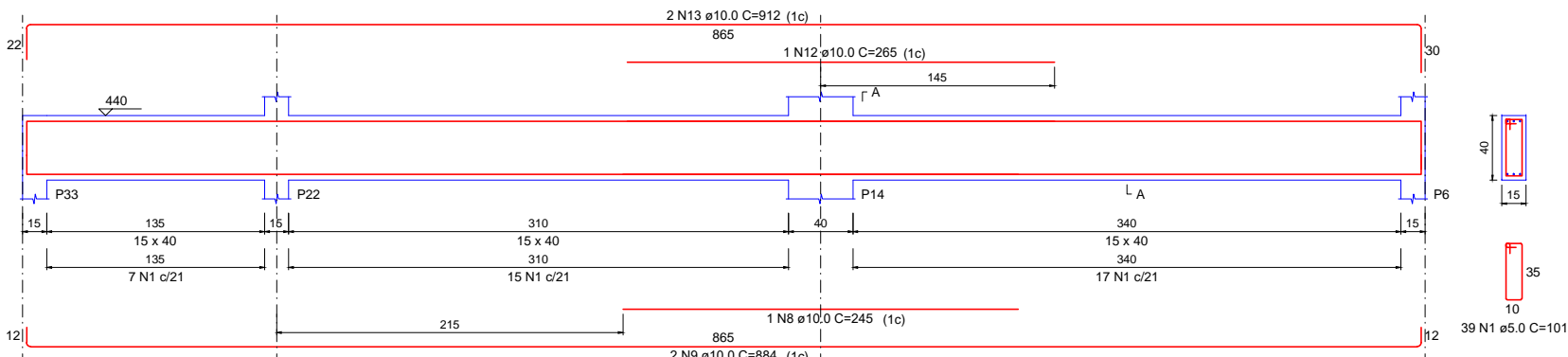


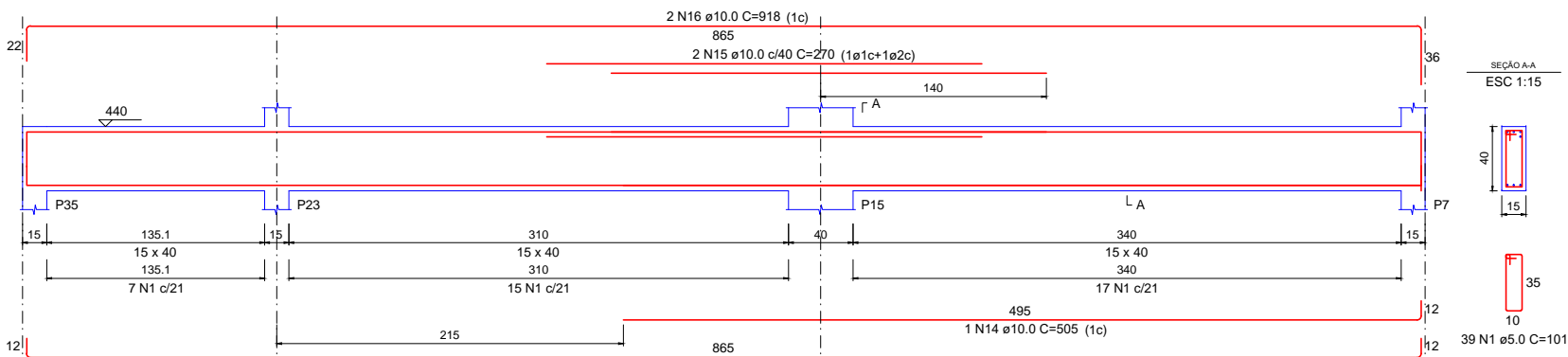
V229  
ESC 1:15



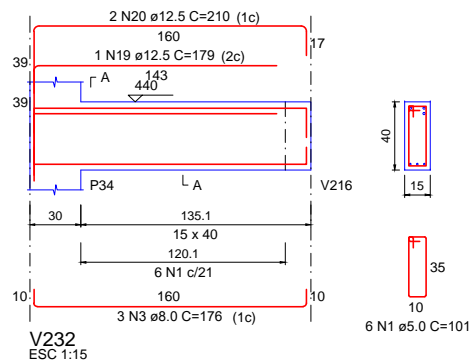
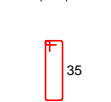
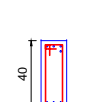
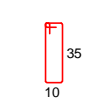
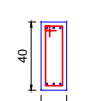
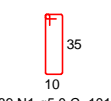
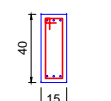
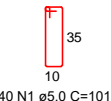
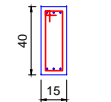
V230  
ESC 1:15



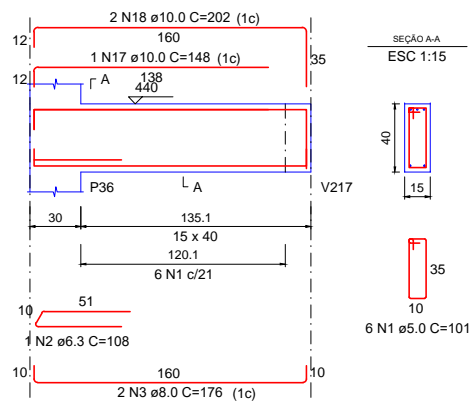
V231  
ESC 1:15



V233  
ESC 1:15



V232  
ESC 1:15



V234  
ESC 1:15

RELAÇÃO DO AÇO

AÇO	N	DIAM (mm)	QUANT	V231	
				V232	V233
AÇO	N	DIAM (mm)	QUANT	C.UNIT (cm)	C.TOTAL (cm)
CA60	1	5.0	169	101	17069
CA50	2	6.3	1	108	108
	3	8.0	5	176	880
	4	10.0	1	225	225
	5	10.0	2	882	1764
	6	10.0	1	533	533
	7	10.0	2	924	1848
	8	10.0	2	245	490
	9	10.0	6	884	5304
	10	10.0	1	240	240
	11	10.0	2	911	1822
	12	10.0	1	265	265
	13	10.0	2	912	1824
	14	10.0	1	505	505
	15	10.0	2	270	540
	16	10.0	2	918	1836
	17	10.0	1	148	148
	18	10.0	2	202	404
	19	12.5	1	179	179
	20	12.5	2	210	420

RESUMO DO AÇO

AÇO	DIAM (mm)	C.TOTAL (m)	PESO + 10% (kg)
CA50	6.3	1.1	0.3
	8.0	8.8	3.8
	10.0	177.5	120.4
	12.5	6	6.3
CA60	5.0	170.7	28.9
PESO TOTAL (kg)			
CA50	130.8		
CA60	28.9		

Volume de concreto (C-25) = 2.06 m³  
Área de forma = 32.54 m²